

A Possible Change of Hand in L638 (Athos, Dionysiou 19)

Dr Amy C. Myshrall for the International Greek New Testament Project

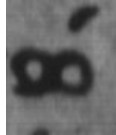
Published at <http://epapers.bham.ac.uk/1821/> on 28.10.2013

Hand 1: F1r – F230v; F262r – end.

Hand 2: F231r(?) – F261v.

Omegas at the end of lines

Hand 1



F221r



F160r



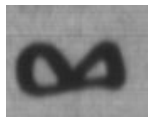
F123r

Hand 1 demonstrates a rounded omega. There is variation, with some being open and some being closed. The first image has the classic flick under the left bowl, showing the ductus of the letter.

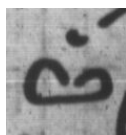
Hand 2



F231r



F236r



F240r

Hand 2 demonstrates a flatter omega. There is still variation, with both open and closed versions, but the base is generally much flatter than hand 1. The open version also has very bent over arms. Generally hand 2 lacks the classic flick under the left bowl, suggesting a different ductus.

Nus

Hand 1



F221r



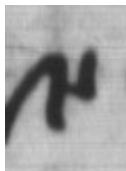
F160r



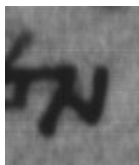
F141r

Hand 1 writes his nu with two strokes. A straight vertical stroke often with small finials, and one other stroke to form a rounded right hand side to the letter. This results in a curved 'u' shape.

Hand 2



F231r



F233r

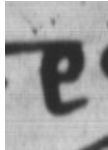
Hand 2 writes his nus in three strokes. There is still a straight vertical, but then two more straight strokes form the remainder of the letter. This means there is no curve like in hand 1, but a pointed base to the right hand side of the letter, more like a 'v' shape.

Rhos

Hand 1



F220v



F141r

Hand 1 has an upright rho. The length of the tail does vary, but generally is short. It is most probably written in more than one stroke.

Hand 2



F236r

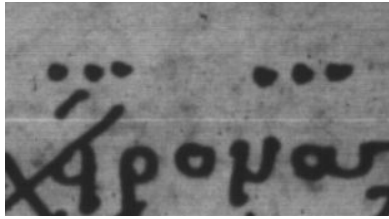


F240r

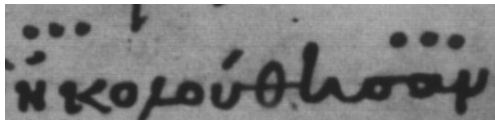
Hand 2 has a rho which has tendency to lean in an oblique fashion. There is quite a lot of variation, but this oblique form does not appear in hand 1. Hand 2 does use some upright rhos as well, so this difference is not definitive.

Triple dots

Hand 1



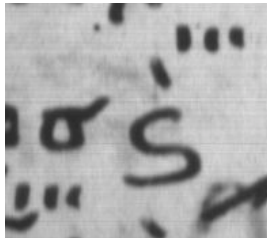
F141r



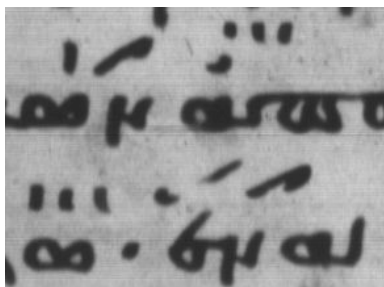
F123r

Hand 1 has nicely rounded dots.

Hand 2



F233v

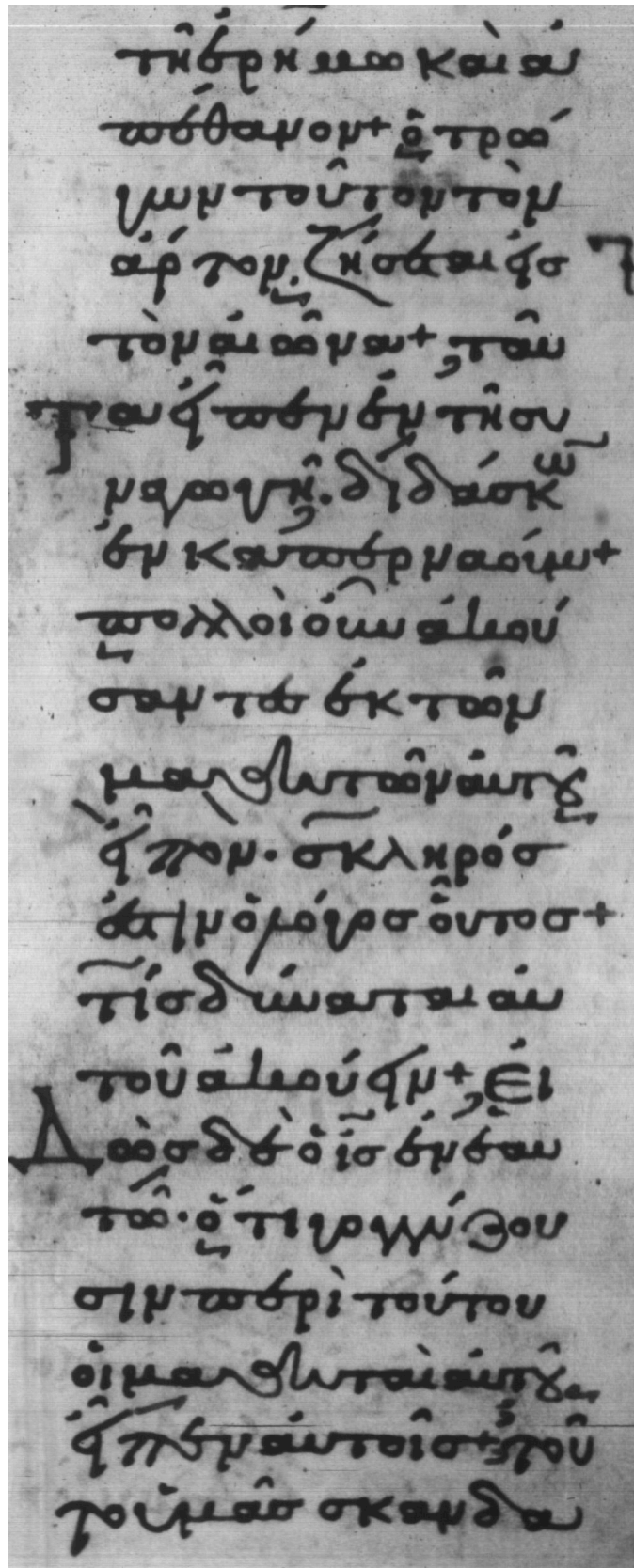


F236r

Hand 2 has triple dots which are actually short lines, not rounded dots.

General Appearance

Hand 1



F20r

Hand 1 flows nicely, and demonstrates rounded letters and a more even hand throughout. Letter shapes tend to be consistent.

Hand 2

καὶ ἀφ' ὧν τὸ πρῶτον
 ρισμὸν ἔδωκεν πρῶτον καὶ
 αὐτοὶ οὐκ ἐσλῆθον
 τὸ πρῶτον ρισμὸν ἵνα
 μετὰ τὸν ρισμὸν ἀλλή-
 λω φάσιν τὸ πάσχα·
 ἔκτον γὰρ ματ-
 ρὴν καὶ ῥῶν ἡμερῶν οἱ
 ἀρατῶν τὰ ἔργα
 ἔγνω τὸν ἡμῶν ἀπὸ γα-
 λῶν πρὸς ἡμεῖς ἀφ' αὐ-
 τοῦ ἀρχιερέως ὅπου
 οἱ γραμματεῖς καὶ οἱ
 πρῶτοι βύτροι σὺν
 χθίσαντες ὁ δὲ πέτρος
 ἐκ κομποῦ τῆς αὐτοῦ αἰσῆς
 μακροθυμίας ἐσσηύθη
 αὐλὴν τοῦ ἀρχιερέως
 καὶ ἐσλῆθον ὅσοι ἐ-
 θητο μετὰ τὴν ὑπὸ κρῆ-
 ντων ἰδὼν τὸ τέλος

F232r

Hand 2 is more angular, preferring straight lines in his letters. He lacks the flow of hand 1. There is more space left between each letter, making the hand appear stilted. This gives a general appearance of less black ink in the column compared to the empty space in the column.

Codicology

Unfortunately the codicology of the manuscript sheds no light on whether this is a supplement or not. The quire signatures are found at the bottom left on the following recto folios in the vicinity of the area in question:

F207 κη

F215 κθ

F223 λ

F230 λα

F238 λβ

F246 λγ

F254 λδ

F262 λε

As these were likely added after the manuscript was penned, they have been added to the possible supplement as well. Occasionally a supplement will lack these, or demonstrate a different hand, but that is not the case here.

Of interest though, quire λ on F223 seems to be a page short at the end. This is in the general area where there is a question over the hand change.

The change of hand is more problematic at the beginning than the end. F231r in appearance has no difference to hand 1, but this is where the first small changes to letters appear. The change back from hand 2 to hand 1 at Folios 261v to 262r is far more pronounced. This also coincides with a fresh quire. The beginning of the possible supplement misses the beginning of a quire by a page.

Conclusion

The idea of a second hand has some merit, but is not definite. The manuscript should not be split into two, as a main text and supplement. As the beginning of the change in hand is not definite, a note also cannot be added to the text at this point without possibly causing confusion.